

COVID-19 UPDATES

SAFETY UNIT

TRACEY SMITH
LUCINDA WEST
GLORIA MCNEIL

SAFETY UNIT

COVID-19 UPDATES

SECTION

SECTION 1

- **CURRENT UPDATE**
- **LATEST COVID-19 STATISTICS**

SECTION

SECTION 2

- **COVID-19 VARIANTS**

SECTION

SECTION 3

- **LAMBDA VARIANT**
- **DELTA PLUS VARIANT**

SECTION

SECTION 4

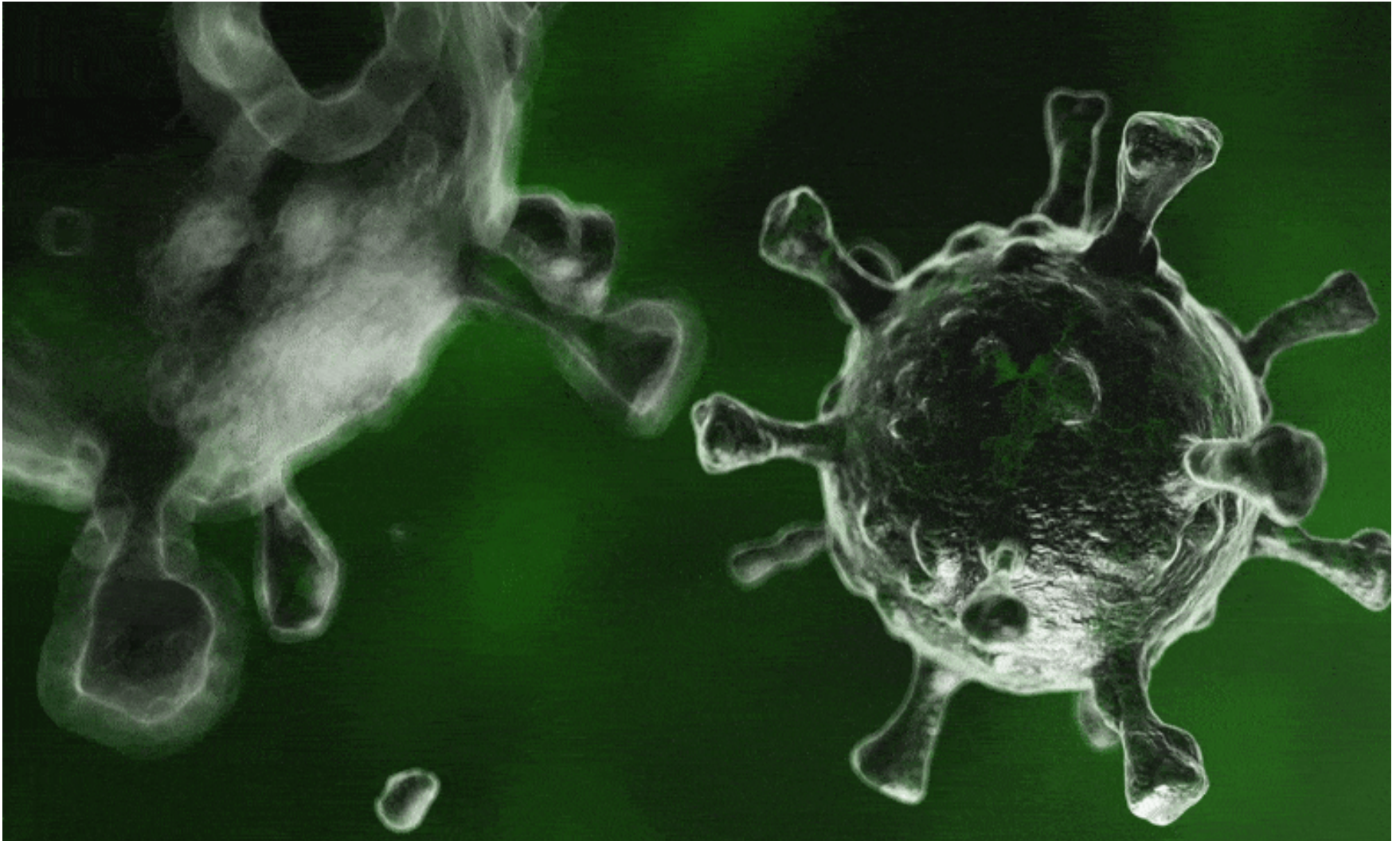
- **EMPLOYEE HEALTH SCREENER**

SECTION

SECTION 5

- **CONCLUSION**
- **FOLLOW CDC GUIDELINES**

SECTION 1 – CURRENT DELTA UPDATES

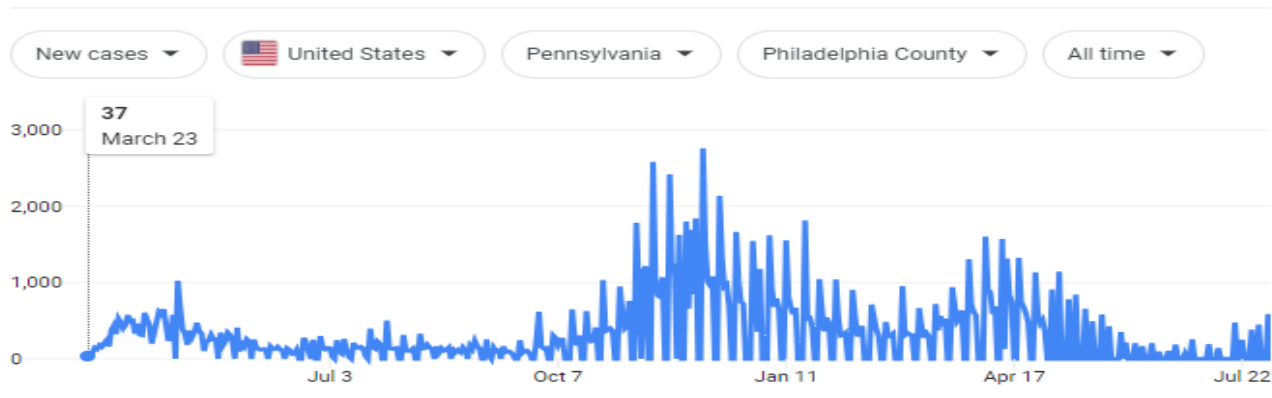


SECTION 1: CURRENT COVID-19 STATISTICS

Statistics

New cases and deaths

From [The New York Times](#) · Last updated: 21 hours ago



[About this data](#)

Each day shows new cases reported since the previous day ·

Cases

From [The New York Times](#) · Last updated: 21 hours ago



Cases

1.23M

+1,223

Deaths

27,868

+11

Location

Philadelphia County

Cases ↓

157K

Deaths

3,784

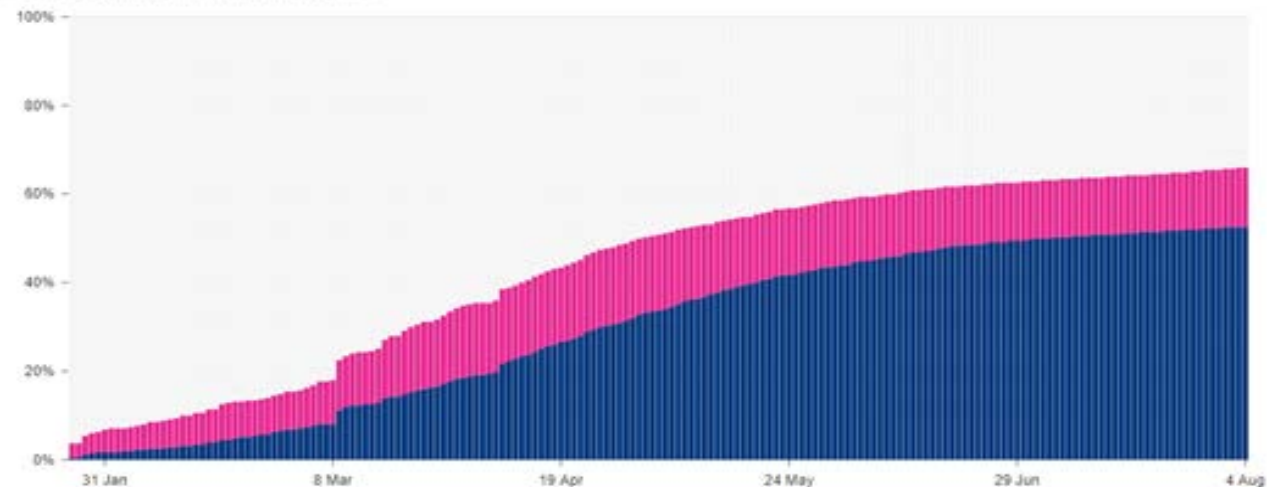
SECTION 1: PENNSYLVANIA STATISTICS

How many COVID-19 vaccines has Pennsylvania administered? ⓘ

In Pennsylvania, **8,447,705** people or **65%** of the state has received at least one dose.

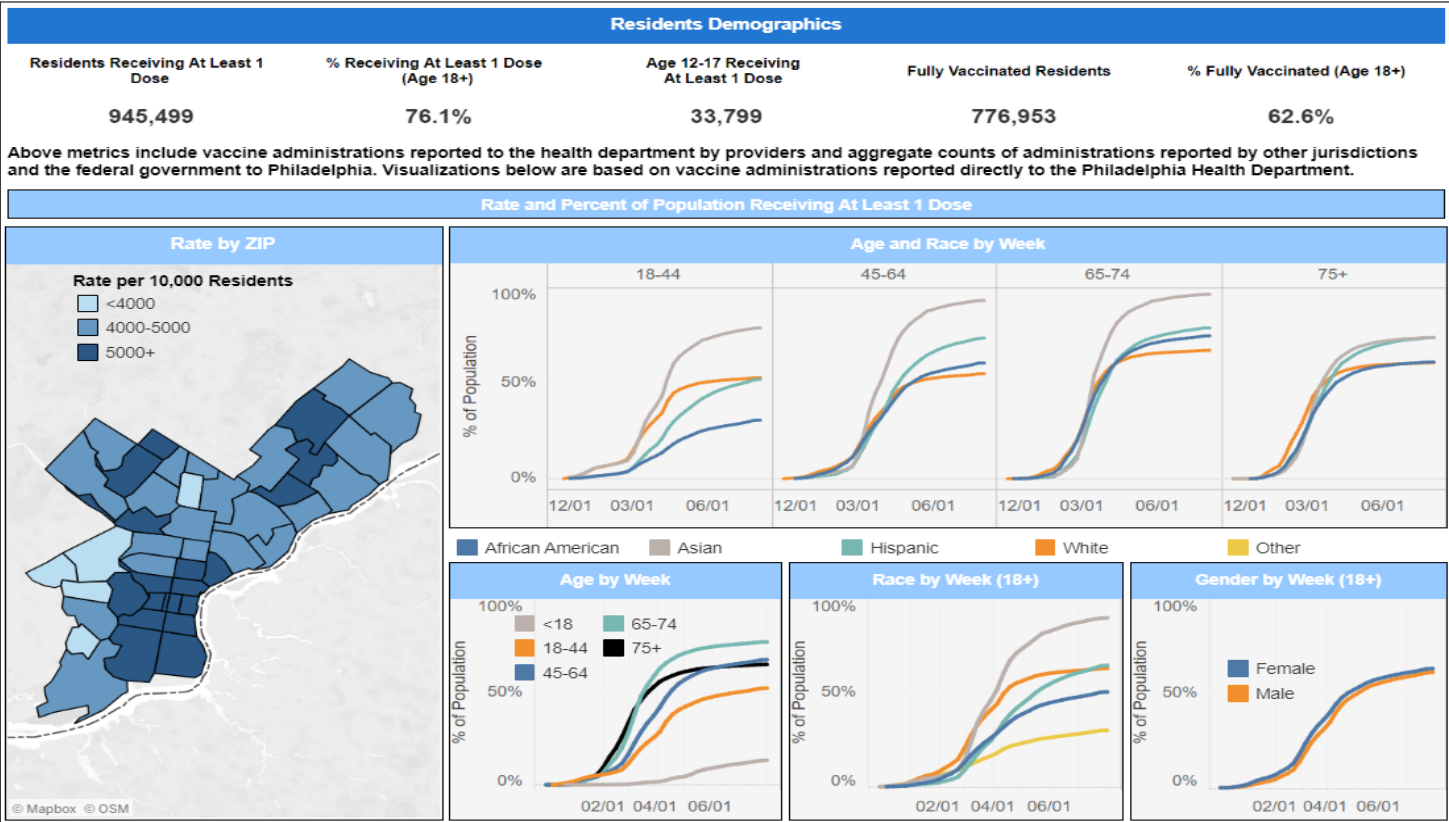
Overall, **6,743,072** people or **52%** of Pennsylvania's population has been fully vaccinated.

Percent of people receiving vaccines in Pennsylvania



Sources: Centers for Disease Control and Prevention. [see more](#)

SECTION 1: PHILADELPHIA COUNTY





SECTION 4:

COVID-19 VARIANTS

VARIANT CLASSIFICATIONS (WHO)

- ❑ Alert for Further Monitoring – (13) currently circulating variants
- ❑ Variant of Interest (VOI) – (4) Genetic changes known to influence virus characteristics and have produced significant community clusters in several locations. Tier labeled with Greek alphabet character.
- ❑ Variant of Concern (VOC) – (5) Demonstrated increased transmissibility and/or has evidence of ability to evade vaccines or current therapeutics (antibody response).
- ❑ Variant of High Consequence (VOHC) – Currently there are no SARS-CoV-2 variants that rise to the level of high consequence

US classifications may differ from those of WHO because the importance of variants may differ by location.

Coronavirus variants of concern

August 2021

VARIANT NAME: **Alpha**

FIRST CASE DISCOVERED IN: United Kingdom in September 2020.

IS IT EASILY SPREAD? Yes, approximately 50% increased transmission.

VARIANT NAME: **Beta**

FIRST CASE DISCOVERED IN: South Africa in May 2020.

IS IT EASILY SPREAD? Yes, approximately 50% increased transmission, and resistant to some antibodies.

VARIANT NAME: **Gamma**

FIRST CASE DISCOVERED IN: Brazil in November 2020

IS IT EASILY SPREAD? Somewhat resistant to antibodies.

VARIANT NAME: **Delta**

FIRST CASE DISCOVERED IN: India in October 2020

IS IT EASILY SPREAD? Yes, increased transmission, resistant to some antibodies, even to those already vaccinated.

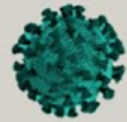
SECTION 5:



ALPHA



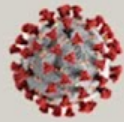
BETA



GAMMA



DELTA



DELTA PLUS



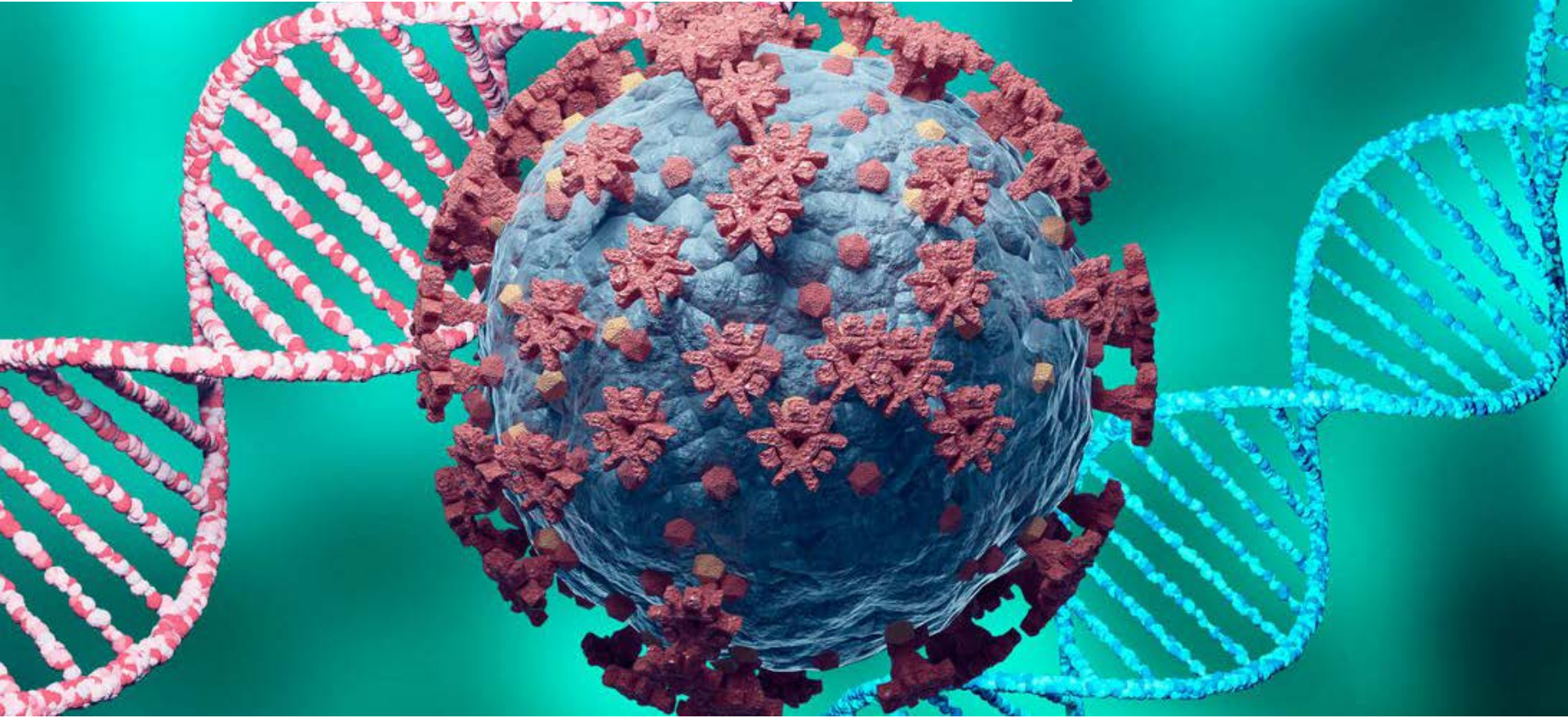
LAMBDA VARIANT: EMERGING THREAT?



CORONAVIRUS · Published 14 hours ago

What is the new delta plus variant?

The delta plus variant has spike proteins that can latch onto human cells



DELTA PLUS VARIANT - K417N

Discovered in India
February 2021

Found in 15 countries
and 17 states.

California currently
has 200 cases

The "plus" refers to the
newer variants K417N
spike protein mutation
which allows the virus
to get into our cells

Also found in the
earlier Beta variant

It can make certain
COVID-19 treatments
less effective

PROTECT & PREVENT THE SPREAD



Wash hands with soap and water or an alcohol-based sanitizer



Keep a distance of at least 6' between anyone who coughs or sneezes



Try best not to touch eyes, nose and mouth



Cover mouth and nose with bent elbow or a tissue when coughing



Seek medical attention if having difficulty breathing and a high fever



Follow the directions of national or local health authorities

SECTION 3: EMPLOYEE HEALTH SCREENER



EMPLOYEE HEALTH SCREENER

Employee Health Screener

The employee health screening tool was updated to include new COVID-19 screening questions and instruction based on vaccination status. Employees who have accessed the screening tool using their mobile devices in the past have cookies/cache embedded in their browser history that redirects them to the older version when they access the website. Employees who cannot access the updated version, must delete the cookies and cache on their mobile device to resolve the issue. Instructions on removing cache can be found [here](#).

The updated online tool can be accessed utilizing the same link that you may have saved to your tablet, laptop or cell phone: <https://www.phila.gov/employee-screener/#/>.

Note: You will know that you are using the newly updated screening tool when you scroll to the very last question and see the vaccination status question.

Reminder of Hours Type Changes

Based on the resumed use of the hours type, please refer to the following table which provides guidance on when and how the hours types should be used:

EMPLOYEE HOUR TYPE & DESCRIPTION

Hours Type	Description
COVID Excused	Only to be used if an employee is directed to quarantine by the departmental HR or Safety professional AND is out of the office due to COVID illness if the exposure occurred at work. Otherwise, an employee must use their own leave time.
Regular Hours	Any regularly scheduled work onsite.
Work From Home	Any regularly scheduled approved virtual work.
Excused Time	Any normally excused hours such as, early dismissals as determined/approved by Department or citywide.
COVID Onsite	DO NOT USE. Disabled as of 6/30/2021 at 11:59 pm.
COVID Offsite	DO NOT USE. Disabled as of 6/30/2021 at 11:59 pm.

