



Philadelphia International Airport (PHL) Northeast Philadelphia Airport (PNE)

Kyle Sundin

Director, Commercial Parking & Ground Transportation

June 25, 2024



City of Philadelphia,
Department of Aviation



PHILADELPHIA INTERNATIONAL AIRPORT
NORTHEAST PHILADELPHIA AIRPORT



Department of Aviation's Commercial Parking & Ground Transportation

PHLPNE

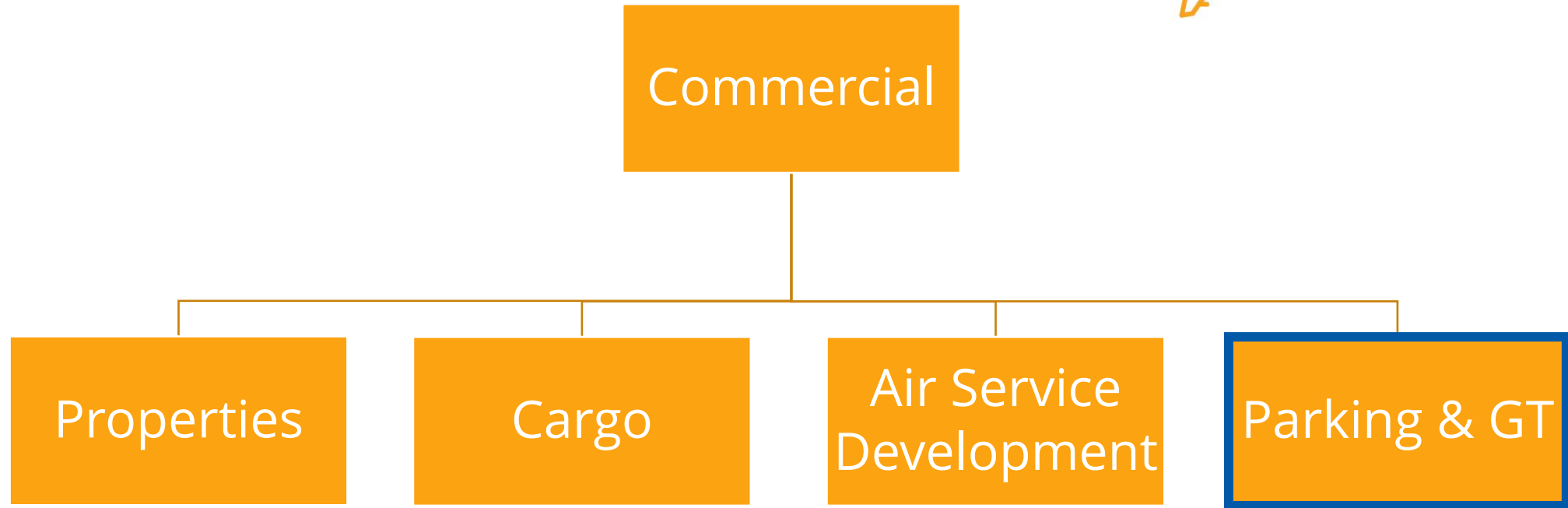
PHILADELPHIA INTERNATIONAL AIRPORT
NORTHEAST PHILADELPHIA AIRPORT

Overview – Commercial Parking & GT

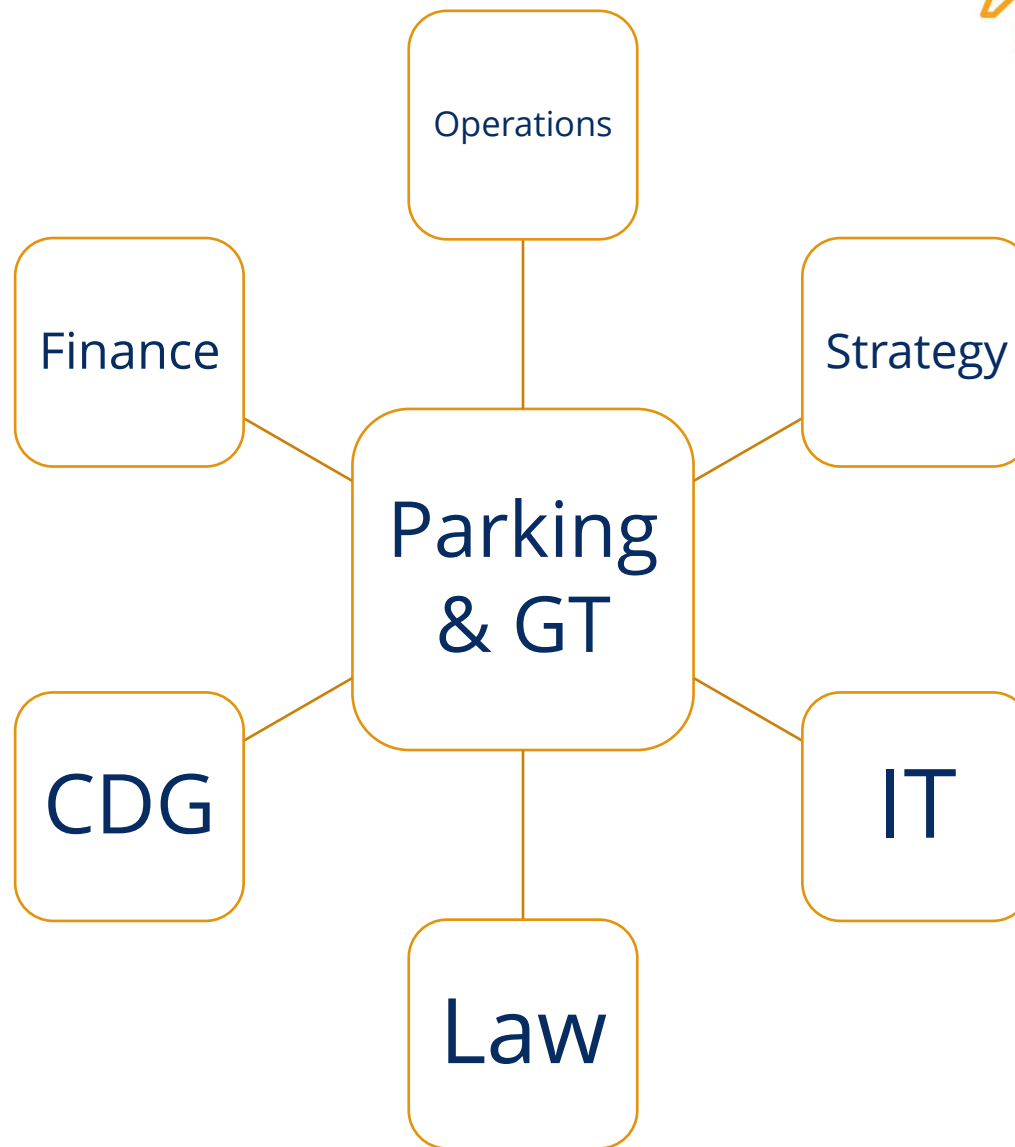


- Direct the commercial strategy of PHL's parking and ground transportation portfolio
- Manage day to day parking operations
- Shepherd ground transportation agreements and permits
- Maximize guest experience
- Plan for growth

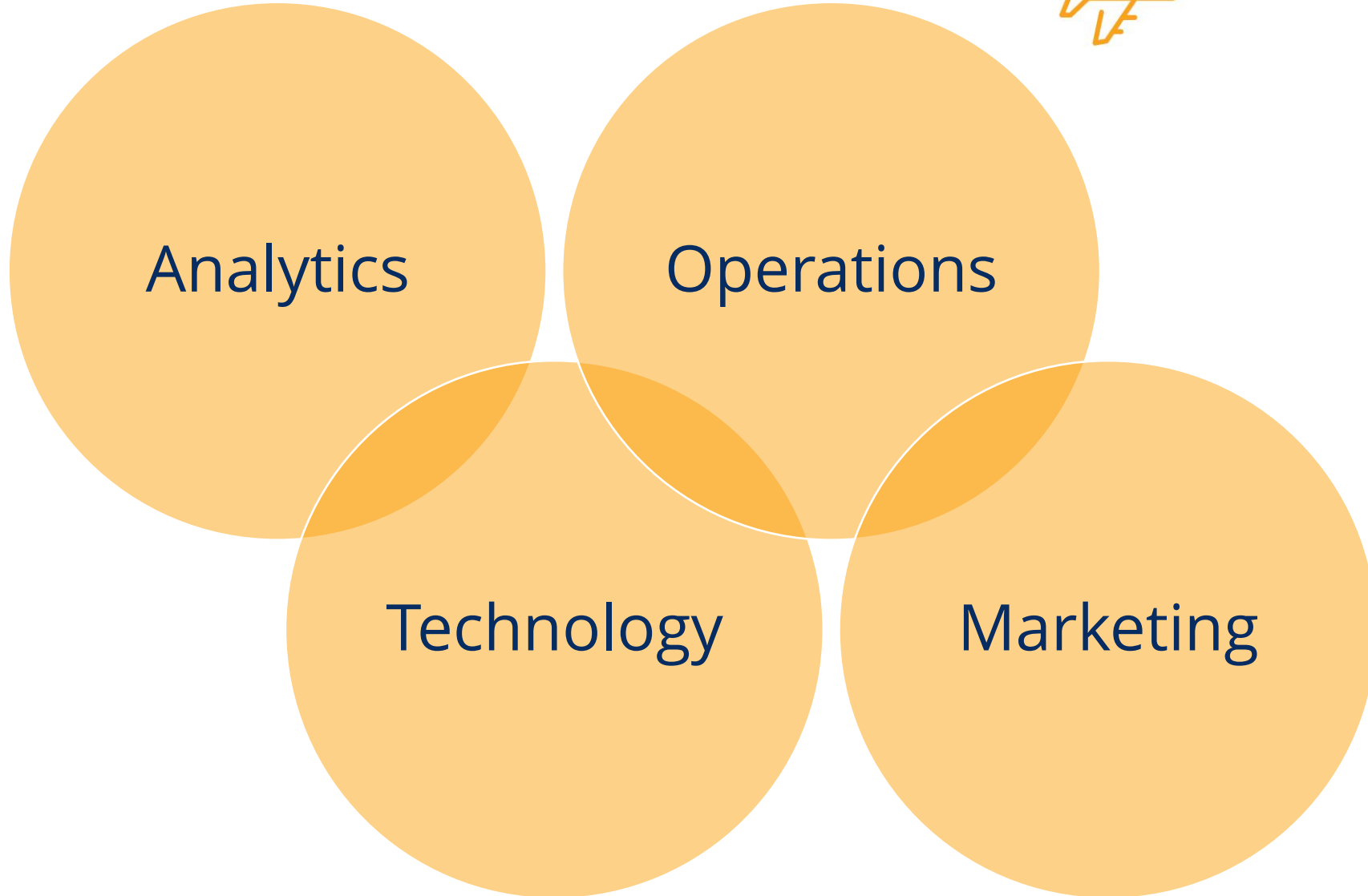
Commercial



Collaboration



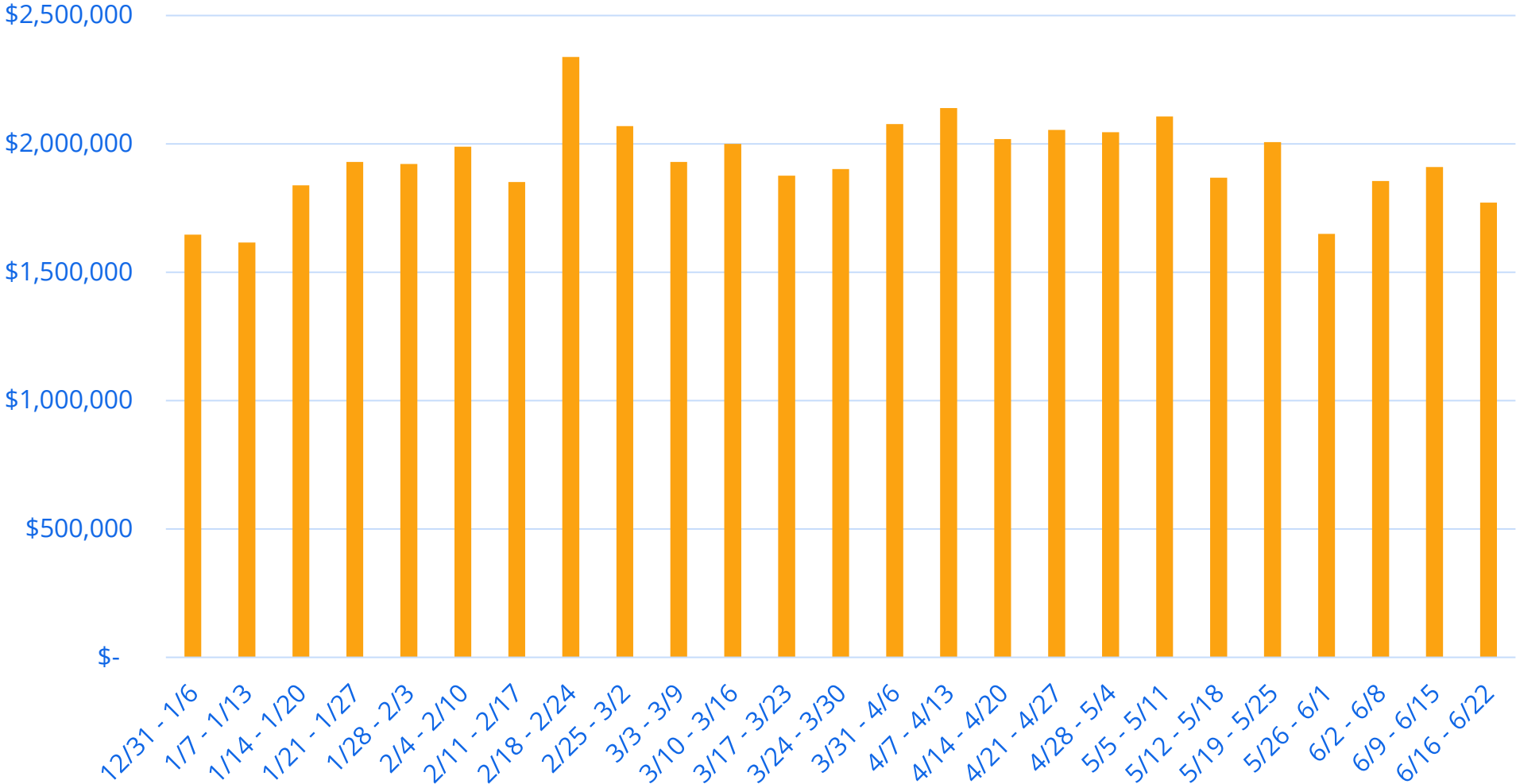
What We Do



Analytics

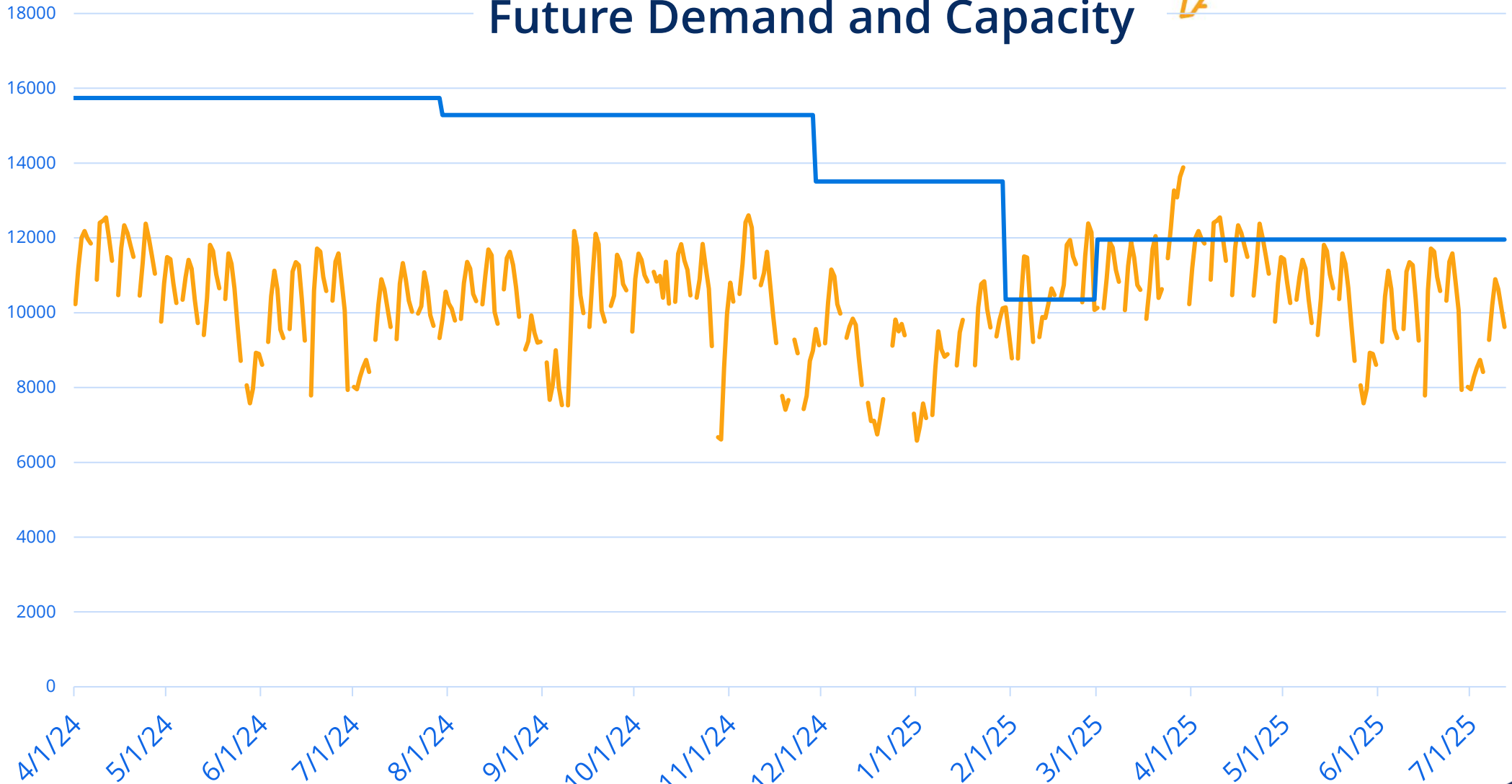


Weekly Parking Revenue



Analytics

Future Demand and Capacity



Technology



Parking Guidance System & Garage Lighting

- System currently in design
- Camera based
- Directional signage included



Technology



Prebooking

- Ability to reserve parking up to 365 days in advance
- Begin with Economy
- Expand to Garages
- Sell ancillaries like lounge access
- Able to dynamically price
- Loyalty program

A **TERMINAL** PARKING

Walk
5-10 mins

- Prebook your entire parking stay for Terminal A
- Short, easy walk to all Terminals
- Safe and official
- Cancellations up to 1 hour before scheduled arrival
- Height Restrictions:
Surface - No restrictions
4th Level - Clearance 10'
5th & 6th Levels - Clearance 8' 6"

Parking adjacent to Terminal A

\$352.00

[Book now](#)

[More info](#) [Map](#)

P6 **ECONOMY**

Bus
15 mins

- Prebook & save in our best value lot!
- Frequent shuttle bus service to all Terminals
- Safe and official
- Cancellations up to 1 hour before scheduled arrival
- Height Restrictions:
Surface - No restrictions

Lowest price

Drive-up rate
~~\$280.00~~

Price you pay today
\$200.00

Book now & save \$80.00

[Book now](#)

[More info](#) [Map](#)

Operations



Curbside Valet

- Three drop off locations on Departures Roadway
- Drive up or bookable online
- Additional services offered – car wash?



Other Initiatives

- EV Charging
- Business Intelligence
- Consolidated Rental Car Facility
- Economy Parking Location Analyses





Thank You!

Kyle Sundin



City of Philadelphia,
Department of Aviation



PHILADELPHIA INTERNATIONAL AIRPORT
NORTHEAST PHILADELPHIA AIRPORT